



Alexian Brothers Tour of Elk Grove

August 5 - 7, 2011

Technical Guide

Pro Women NRC Race

Produced by:
SPECIALEVENTS
management
www.chicagoevents.com



Table of Contents

Section 1: Information & Regulations

1. General Information

- A. Event Staff
- B. Overall Schedule of Events
- C. Medical Information
- D. Elk Grove Village Phone Numbers
- E. Communications
- F. Media
- G. Timeline Key Meetings and Events
- H. Team Vehicle Information

2. Specific Regulations

Articles

- 1. Organization
- 2. Type of Event
- 3. Participation
- 4. Race Headquarters
- 5. Starting Order Time Trial
- 6. Radio-Tour
- 7. Neutral Support
- 8. Feeding
- 9. Finishing Time Limits
- 10. Classifications-Time Bonuses
- 11. Prizes
- 12. Anti-Doping
- 13. Awards Ceremony
- 14. Penalties

Section 2: Stage by Stage Information

1. Stage 1 – Time Trial

- A. Course Description
- B. Rider Sign-In / Staging
- C. Start Location and Procedures
- D. Time Cut
- E. Logistics

2. Stage 2 – Circuit Race

- A. Course Description
- B. Rider Sign-In / Staging
- C. Time Cut

- D. Stage Time Bonuses
- E. Sprint Challenge with Time Bonus

3. Stage 3 – Criterium

- A. Course Description
- B. Rider Sign-In / Staging
- C. Stage Time Bonuses
- D. Sprint Challenge with Time Bonus

Section 3: Awards Distribution

- A. Procedures and requirements

Section 1 Information & Regulations

1. General Information

A. Event Staff

Mayor Craig B. Johnson – Race Director

Special Event Management Staff Directory

CEO – Hank Zemola
Controller – Greg Schmidt
Assistant Race Director– Josh Ruston
Associate Race Director – Steve Hansen
Race Coordinator – Matt Scodellaro
Media and Marketing Director/Awards – Karyn Serota
Manager – Alan Cervenka
Logistics – Rich Zemola
Logistics – Dan Oleksiuk
Registration – Art Liederman
VIP Host – Brian Jones
Sponsorship Sales – Kevin Turk
Sponsorship Sales – Laura Wilke
Volunteer Coordinator - Dianne Patterson
Public Relations Manager – Fred Newton
Art Director – Sean McGahan

Village of Elk Grove

Craig Johnson – Mayor of Elk Grove Village
Raymond R. Rummel – Village Manager
Matthew Roan – Deputy Village Manager
Joe Carey – Assistant Village Manager
Nick Olsen – Police Sergeant
WCNCB President – David Parulo
CVB VP of Marketing – Lynda Claytor

Race Services

Neutral Support – Provided by Shimano
Timing and Results – D & L Sound, Doug Ashbaugh
Announcer – Jeff Roake
Announcer – Greg Bliss
Announcer – Todd Busted

Race Officials

Chief Referee – David Fowkes
Assistant Chief Referee – Nikki Cypranowski
Chief Judge – Ken Hart
Judge – Heidi Mingesz
Judge – Dee Dee Scadron
Judge – Sara Rodney
Commissaire – Steve Eppel
Commissaire – Bruce Brasaemle
Moto Referee/Commissaire – David Papadopolous
Moto Referee – Sydney Wiley
Moto Referee – Stephen Johnson
Moto Referee – Brett Griggs
Moto Referee – Shawn Garls

A special thanks for the assistance of the emergency services, public works and police departments from the Village of Elk Grove.

B. Overall Schedule of Events

2011 - Tour of Elk Grove - Schedule of Events

August 5, 2011 - Friday				
Time	Event	Distance	Prize	Places
3:30 PM	Mayor's Charity Time-Trial (Every 60 seconds)	7.2 K	Medals	3
4:30 PM	Woodfield Chicago Northwest Convention Bureau Pro Women's Cat 1/2 Stage 1 Time Trail	7.2K	\$2,000	20
5:45 PM	AXA Equitable Pro Men Stage 1 Time-Trial	7.2K	\$9,000	20

August 6, 2011 - Saturday				
Time	Event	Distance	Prize	Places
8:30 AM	Safe-Guard Basement Technologies Category 5 (Heat 1)	20 Mins.	Awards	3
9:00 AM	Goose Island Category 5 (Heat 2)	20 Mins.	Awards	3
9:30 AM	Rocco Vino Women's Category 3/4	30 Mins.	\$1,000	10
10:15 AM	Suzuki Motors Corporation Category 4	35 Mins.	\$1,500	20
11:00 AM	McDonald's Category 3	60 Min.	\$2,500	20
12:15 PM	Elk Grove Village Bank & Trust Category 1/2	70K	\$7,000	25
2:15 PM	Rotary Club Pro Women's Cat 1/2 Stage 2 (Circuit Race)	50 Mins.	\$3,500	20
4:00 PM	Chicago Blackhawks Pro Men Stage 2 (Road Race)	155K	\$28,000	25

August 7, 2011 - Sunday				
Time	Event	Distance	Prize	Places
8:00 AM	American Airlines Masters 35+ Category 5	20 Min.	Awards	3
8:30 AM	ManorCare Health Services Masters 35+ 3/4	45 Mins.	\$2,000	20
9:30 AM	Village Cycle Masters 35+ Category 1/2	50 Mins.	\$3,000	20
10:30 AM	Heart of the Marine Foundation - Adaptive Athlete Race	30 Mins.	\$2,500	20
11:10 AM	Trustees Fun Ride	1 Lap		
11:30 AM	Shimano Big Wheel Race			
Noon	Safeco Insurance Category 1/2	80K	\$8,000	25
1:45 PM	Comcast Pro Women's Cat 1/2 Stage 3 (Criterium)	50 Mins.	\$4,500	20
3:15 PM	Gullo International Pro Men Stage 3 (Circuit Race)	121K	\$25,000	25

Pro Women and Pro Men Overall General Classification Prize Money				
	Alexian Brothers Pro Men Overall Prize Money		\$44,500	25
	Alexian Brothers Pro Women's Cat 1/2 Overall Prize Money		\$5,000	20
	Pro Men Overall Team Awards		\$3,500	3

Total Prize Money	\$ 150,000.00
--------------------------	----------------------

C. Medical Information

Area Hospital

Alexian Brothers Medical Center
800 Biesterfield Rd.
Elk Grove Village, IL
847.437.5500

On-Site Medical

On-Site non-emergency medical needs for scrapes and bruises will be attended by nurses from Alexian Brothers Medical Center. There will be a medical tent located behind the Start/Finish Stage in the skate park parking lot for the races located on Elk Grove Boulevard between Ridge and Victoria Streets.

Stationed on the course near the emergency command post will be an ALS medical ambulance with paramedics for quick reaction to any medical calls.

Race Caravan Medical Support

For immediate response an ambulance is centrally located on the road course to provide aid to injured riders during the Circuit Race Stage.

Alexian Brothers Hospital Medical Staff

Medical staff will be provided by the Alexian Brother Medical center and a first aide tent will be located adjacent to the start/finish of the Elk Grove portion located at 220 Elk Grove Boulevard.

- All emergency situations will follow the emergency medical response protocols set forth by the Village of Elk Grove.

D. Elk Grove Village Contact List

General Number	847-439-3900
Police Department	847-357-4100 / 911
Fire Department	847-734-8000 / 911
Public Works	847-734-8800

E. Communications

Race Communications

Radio Communications equipment will be provided to staff, officials and select event staff in the form of hand-held radios. These radios will be used for separate functions with channels for:

- Officials
- Race Caravan
- Radio - Tour
- Media Operations
- Event Staff
- Registration
- Police
- Fire Department

Transmitting Priorities

- Immediate threat to life or safety of person(s)
- Possible hazards to life, safety, or property
- Race critical information or decisions (especially officials' decisions)
- Urgent, time critical transmissions
- All other communications

F. Media

Media Information

The event organizers and the Village of Elk Grove respectfully ask that in all instances the event be referred to by its full name, the "Alexian Brothers Tour of Elk Grove".

Interviews & Official Spokespersons

Each professional cycling team or individual cyclist in the race and each sponsor will have access to the official spokespersons and contact information for the Alexian Brothers Tour of Elk Grove. Only these representatives may serve as official spokespeople.

The press team encourages each cycling team and or cyclist to be open to granting interviews with the media at a convenient time. The press representatives can assist in arranging interviews with cyclists and teams during the race, if time permits. However, the press representative encourages media contact directly with each team's press officer prior to the race to schedule onsite interviews prior to race day or for a convenient time on-site during the race.

Television Interviews

Team directors and press officers are encouraged to consider the value of television interviews, and accommodate all possible opportunities.

The press representatives request that athletes be prepared for television interviews to take place immediately following each race and prior to the awards ceremonies so that the event may run as scheduled.

Photographers

All photographers hired by teams must also wear a media credentials, and in some instances an official vest, to avoid confusion and in order to be allowed in media specific areas. Approved photo credentials may be picked up in the Media Check in area located just behind the start/finish announcer stand at Audubon Park

on Elk Grove Blvd. between Victoria and Ridge Streets. This is formal notice that any and all images of riders in the race or on site at the race course may be used by the promoter and its agents for a variety of purposes. Riders not wanting to allow the use of their image can do that by not entering the race. Otherwise your entry to the race qualifies as your permission to use your image by the promoter and its agents.

Press Opportunities

It is expected that the top three finishers, the race stage leader and sprint points' winner for that day report to the awards podium immediately after each race to be presented with awards, possible sponsor and media photo opportunities. They should also be available before and after each stage for brief TV interviews. Failure to do so and failure to act in a professional manner may result in not being invited back to race at the TOEG again.

Broadcast Dates for Tour of Elk Grove on Comcast SportsNet

<u>Date</u>	<u>Time</u>	<u>Show</u>
August 27, 2011	7:00pm	Comcast SportsNet
August 28, 2011	5:00pm	Comcast SportsNet
August 30, 2011	12:30pm	Comcast SportsNet
September 17, 2011	12:00pm	Comcast SportsNet

G. Timeline Key Meetings and Events

Friday, August 5, 2011

9:00am-10:00am Registration is located in Hattendorf Center Gymnasium at 225 Elk Grove Blvd. For the Pro Women Cat 1/2 registration will be held from 9:00am to 10:00am

11:30am Full teams in the Pro Women Cat 1/2 participating in the Pro Race must have a representative at the managers meeting. All individual riders without a team must attend. This meeting is at 11:30am at Village Hall in the Council Chambers located at 901 Wellington, Elk Grove Village, IL. See maps at the end of the Technical Guide for more details.

4:30pm – Start Time Stage One

Saturday, August 6, 2011

2:15pm – Start Time Stage Two

Sign-in will be next to the official's stage in a tent just before the finish line. Sign-in will occur 45 minutes before the start of each stage. Riders not appearing for podium presentations for both the stage winners and the overall classification may be fined.

Sunday, August 7, 2011

1:45pm – Start Time Stage Three

Sign-in will be next to the official's stage in a tent just before the finish line. Sign-in will occur 45 minutes before the start of each stage. Riders not appearing for podium presentations for both the stage winners and the overall classification may be fined.

H. Team Vehicles

Team cars will be allowed for the stage one time trial and the stage two circuit race. The stage three criterium will not allow team vehicles on the course. Cars must be driven only by licensed team personnel. Neutral support will be available for stage 2 and stage 3, and may be available upon request for the time trial.

Exclusive parking for the teams with team branded vehicles for the entire event for staging purposes is just south of Elk Grove Blvd on Ridge Ave. See the Time Trial logistics map for location of team vehicles. This is also right next to the team registration location. This parking is not for individual rider's personal non-branded cars. It is important that this area maintains the appearance of a professional race team area. Women teams with trailers may park their trailers here and use this as an area to warm up and prepare for the race

2. Specific Regulations - Tour of Elk Grove – August 5-7, 2011

ARTICLE 1. ORGANIZATION

The Alexian Brothers Tour of Elk Grove is organized by Chicago Special Events Management in conjunction with the Village of Elk Grove under the regulations of USA Cycling (USAC). It is to be held from August 5 to August 7, 2011

The secretary general for each stage is Hank Zemola, Special Events Management. The organization's address is:

Attn: Hank Zemola
Special Events Management
2221 W 43rd St.
Chicago, IL 60609

ARTICLE 2. TYPE OF EVENT

The event is open to women that hold valid International licenses or USA Cycling domestic licenses that hold the category of professional, category 1 or category 2.

The event is registered as a womens NRC event and is held under USA Cycling rules in conjunction with the NRC procedure and points system.

ARTICLE 3. PARTICIPATION

The Womens Pro Three-Day Stage Race is open to only the following:

- UCI Women teams
- National teams
- Club Teams
- Regional Teams
- Individual riders with a Cat 1 or Cat 2 license

Teams shall be composed of a maximum of 8 riders with no minimum.

ARTICLE 4. RACE HEADQUARTERS

The race headquarters for all events is located at:

Hattendorf Center
225 Elk Grove Blvd
Elk Grove Village, IL

Race Headquarters will open at 9:00am on Friday, August 5, 2011

Team representatives are requested to confirm their starters and collect their race numbers at race headquarters from 9:00am to 10:00am on the above date.

The team managers' meeting is scheduled for 11:30pm *at* Village Hall in the Council Chambers located at 901 Wellington, Elk Grove Village, IL. All Teams participating in the Pro race must have a representative at this meeting. See maps at the end of the Technical Guide for more details.

Directions to Race Headquarters

Take I-90 to Arlington Heights Road, Exit and turn south and go approximately 2 miles to Elk Grove Boulevard turn east (left) and proceed to 225 Elk Grove Blvd for registration and race headquarters.

ARTICLE 5. TIME TRIALS

The starting order of the teams is established by the organizer at random based on team requests for their starting order. The promoter reserves the right to start the last five women in order of the overall NRC ranking. Teams may determine the starting order of their riders and need to present their preferred start list at team registration in the morning.

ARTICLE 6. RADIO-TOUR

Radios will be provided to each team car. They are not to be used to communicate with riders and will be set to only receive communications. Race information will be broadcast on channel 10.

ARTICLE 7. NEUTRAL TECHNICAL SUPPORT

The technical support service is handled by Shimano

The neutral support is taken care of by a stationary pit area. Teams may request follow support for the time trial if they do not have a team car and if a suitable arrangement can be made. There are no guarantees that Shimano will be able to provide a support vehicle for the time trial.

ARTICLE 8. FEEDING PROCEDURES

There will be no feeding for any of the stages.

ARTICLE 9. FINISHING TIME LIMITS

Riders must complete 60 percent of the race without being lapped to place in the race with a pro rated time which must not exceed 20 percent of the winners finish time. Any rider lapped prior to 60 percent will be asked to withdraw from the race. The time trial cut off is 30 percent of the winners finishing time.

ARTICLE 10. CLASSIFICATIONS - TIME BONUSES

The following classification(s) to be issued are not standard time bonus. Due to the nature of the Tour of Elk Grove and to bring a higher degree of competitiveness, slightly larger time bonuses are in effect. The bonuses for each stage are listed next to each stage's description below.

ARTICLE 11. PRIZES

The Pro Women's Cat 1/2 race has a \$15,000 prize list.

The following prizes are awarded:

2011 - Tour of Elk Grove Alexian Brothers Pro Women's Cat 1/2 Stage 1 Time Trial - Friday				
Time	Event	Prize	Distance	Field Limit
4:30 PM	Stage 1 Time Trial	\$2,000	4.5 Miles	150
		Place		Award Amount Value
		1		\$540
		2		\$250
		3		\$175
		4		\$150
		5		\$125
		6		\$100
		7		\$100
		8		\$100
		9		\$75
		10		\$50
		11		\$50
		12		\$40
		13		\$40
		14		\$40
		15		\$40

		16		\$25
		17		\$25
		18		\$25
		19		\$25
		20		\$25
		Total		\$2,000

2011 - Tour of Elk Grove Alexian Brothers Women's - Cat 1-2- Saturday

Time	Event	Prize	Distance	Fee	Field Limit	
2:15pm	Women's Cat 1-2 Saturday	\$3,500	50 mins		150	
		Place			Award Amount Value	Primes
		1			\$810	\$300
		2			\$450	
		3			\$225	Time Bonuses
		4			\$175	
		5			\$150	\$250
		6			\$150	
		7			\$150	
		8			\$100	
		9			\$100	
		10			\$100	
		11			\$75	
		12			\$75	
		13			\$75	
		14			\$60	
		15			\$60	
		16			\$60	
		17			\$60	
		18			\$25	
		19			\$25	
		20			\$25	
		Total			\$3,500	

2011 - Tour of Elk Grove Women's - Alexian Brothers Cat 1/2 - Sunday

Time	Event	Prize	Distance	Field Limit	
1:45 PM	Women's Cat 1-2 Sunday	\$ 4,500	50 min	150	
		Place		Award Amount Value	Primes
		1		\$1,040	\$350

		2		\$500	
		3		\$250	
		4		\$225	
		5		\$200	
		6		\$200	Time Bonuses \$300
		7		\$200	
		8		\$150	
		9		\$150	
		10		\$140	
		11		\$140	
		12		\$125	
		13		\$125	
		14		\$100	
		15		\$100	
		16		\$65	
		17		\$65	
		18		\$25	
		19		\$25	
		20		\$25	
		Total		\$4,500	

2011 - Tour of Elk Grove Alexian Brothers Women's Overall - Sunday

Time	Event	Prize	Distance	Fee	Field Limit
	Women's Stage Race Overall Prize Money	\$ 5,000			150
		Place			Award Amount Value
		1			\$1,350
		2			\$675
		3			\$450
		4			\$350
		5			\$275
		6			\$200
		7			\$200
		8			\$200
		9			\$200
		10			\$200
		11			\$150
		12			\$150
		13			\$125
		14			\$125
		15			\$100

		16			\$50
		17			\$50
		18			\$50
		19			\$50
		20			\$50
		Total			\$5,000

ARTICLE 12. ANTIDOPING

The USADA anti-doping regulations are applicable to the Tour of Elk Grove. Moreover, and in conformity with the law of United States of America, the USADA anti-doping legislation is applicable.

The Tour of Elk Grove takes doping very seriously. Any rider that test positive for doping will receive a lifetime ban from the race. Additionally any prize money won must be returned so it can be awarded to the next place rider. It is each rider's responsibility to stay near the finish line and check the bulletin board behind the starting stage for the list of riders to be tested. Team managers should also be aware of the list of riders to be tested and inform them if they have been selected.

Doping Control will be at:

Hattendorf Center Main Entrance (next to registration)
 225 Elk Grove Blvd
 Elk Grove, IL

ARTICLE 13. AWARDS CEREMONY

The following riders must attend the official awards ceremony, or financial penalties up to the prize amount may apply:

The first three riders of each stage

The top three riders in the general classification each day

The riders will present themselves at the podium in a time limit of maximum 15 minutes after crossing the finish line.

ARTICLE 14. PENALTIES

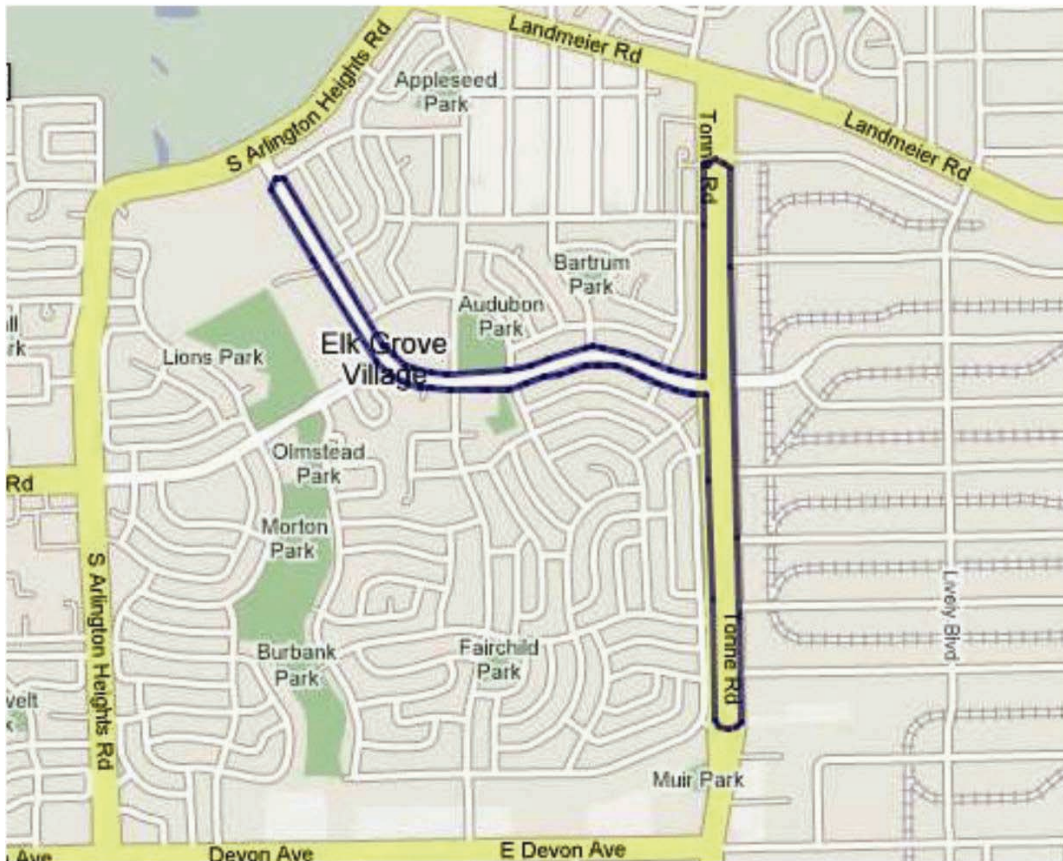
The UCI penalty scale is the only one applicable.

Section 2

Stage by Stage Information

STAGE 1 – TIME TRIAL – At 4:30 P.M. FRIDAY AUGUST 5, 2011

Time Trial Course (7.24K-4.5 miles)



A. STAGE 1 – COURSE DESCRIPTION

The course is one lap of a 7.24K (7242 meters) or 4.5 miles with five turns, with a long finishing straight. Please be aware and courteous of public and private property. The course is on residential and business streets of Elk Grove Village) the start and finish line is located adjacent to the Hattendorf Center parking lot (225 Elk Grove Blvd.).

B. STAGE 1 – RIDER SIGN-IN / STAGING

Time Trial Start List – The start order will be determined at random. The promoter reserves the right to select the last five starters ranked by NRC standings. Teams, please supply a list of riders and your preferred order of start list for consideration at the team check-in.

C. STAGE 1 – START LOCATION & PROCEDURES

The start house for the time trial is located at the corner of Ridge and Elk Grove Boulevard approximately 75 meters west of the main stage start/finish location. Race number placement for the time trial shall be one number placed on the center of the back. Team cars will line up on Ridge Ave just south of the start house and will be allowed to enter the course area one at a time per the course marshal instructions. Cars will be cued in the proper order to follow their riders.

D. STAGE 1 – TIME CUT

Any rider finishing with a time exceeding that of the winner by more than 30 percent shall not be placed. The time limited may in exceptional circumstances be increased by the Commissaries panel in consultation with the organizer.

E. STAGE 1 – LOGISTICS

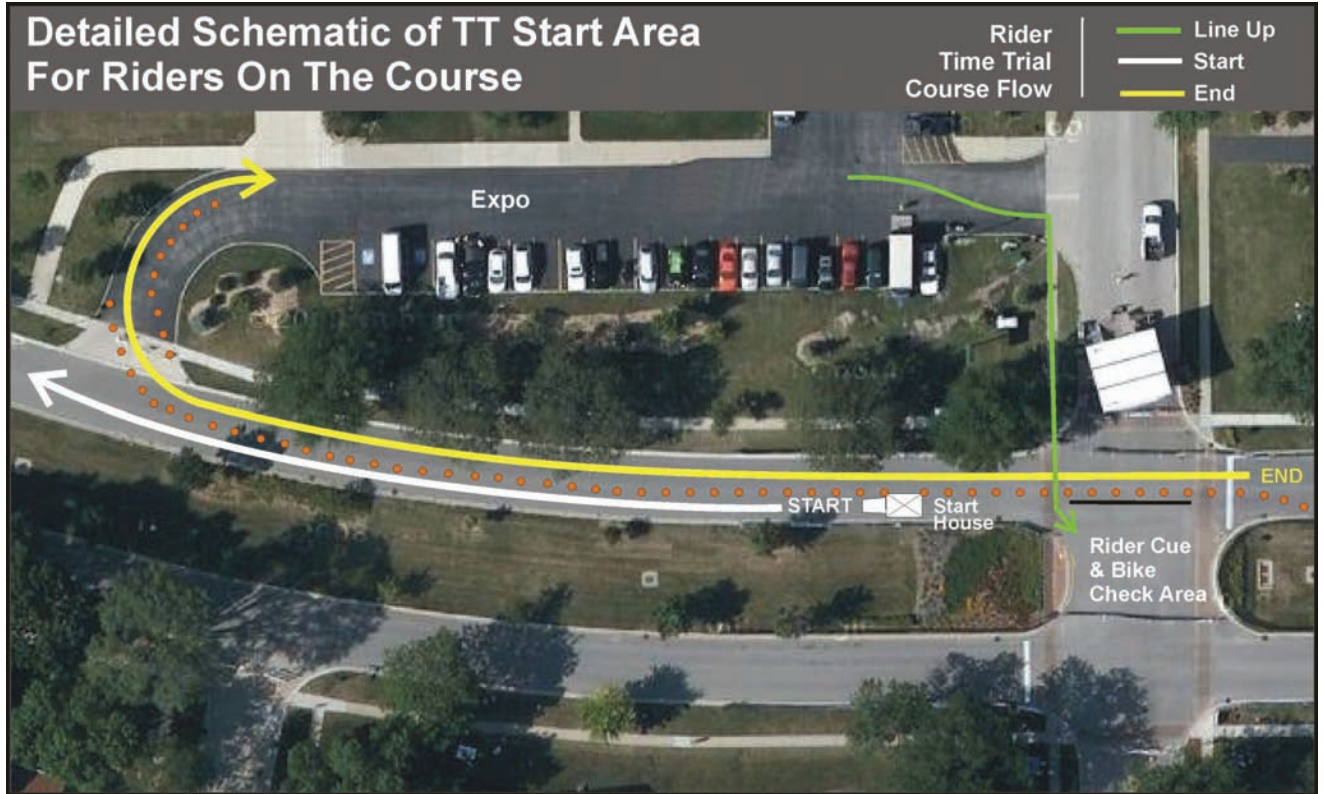
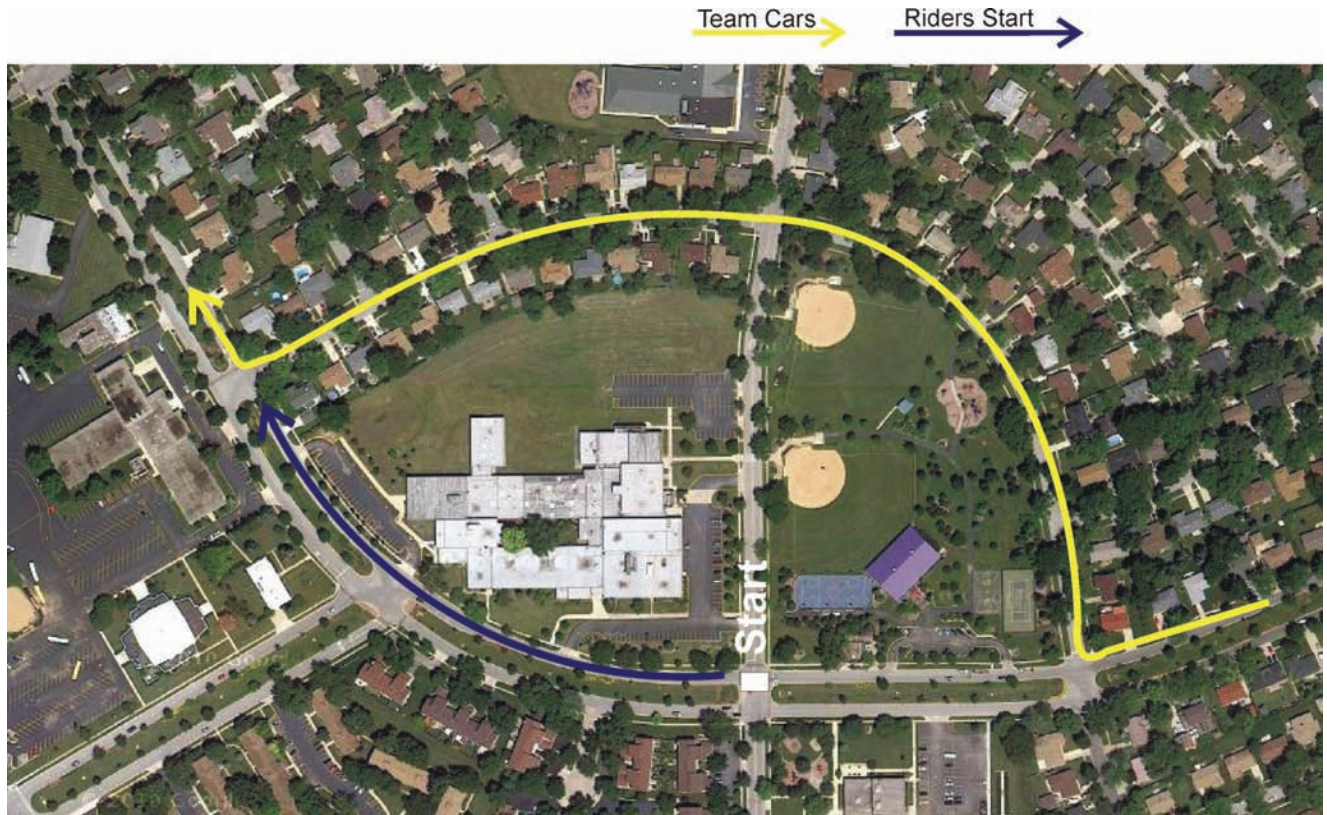
Streets will close at 2:00pm to allow warp-ups on the course; however riders need to use extra caution during this period for any potential hazards on the course. The course will be closed to everyone except the competitors at 3:15pm.

All athletes will line up according to their assigned times on Ridge Street north of Elk Grove Boulevard and carefully cross into the median of Elk Grove Blvd for bike check.. It is the riders responsibility to know their start time and be at bike check with enough time to be checked and cleared to take the start ramp. The ramp is elevated 12” high. All riders must present themselves for checks on their bicycles no later then 15 minutes before their start time and are ultimately responsible to be in position to start the time trial at their designated time.

Team cars will be allowed to follow the riders for the stage one time trial. Every effort will be made to have riders on the same team spaced at start intervals that will make it possible for the team car to finish with one rider and be in position to follow their next rider. Team cars will divert off the course just before the finish line onto Victoria Lane until it intersections with Elk Grove Blvd where race staff will cue team cars in proper order to be launched after their next rider starts. The following map shows this re-staging route.

Start intervals will be either 30 seconds or 60 seconds and will be decided at the managers meeting before the start list is distributed once registration closes and the final number of riders in the race is known.

Logistic Maps & Location of Team Parking

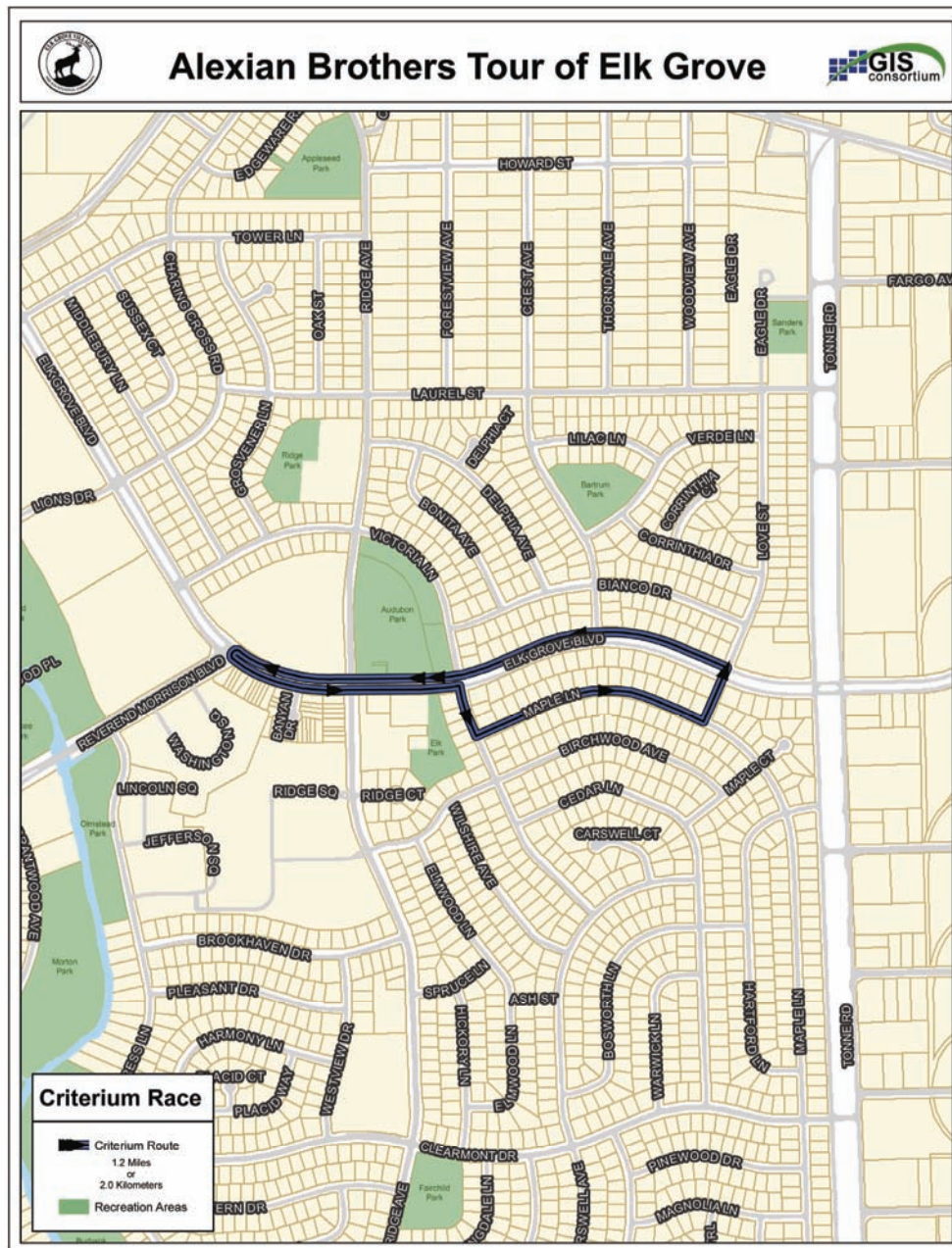


Team Manager's tracking sheet

Rider's Name	Start Time	Finish Time	Cumulative Time	Place in GC
1.				
2.				
3.				
4.				
5.				
6.				
7.				
8.				

Manager Notes:

STAGE 2 – CRITIRIUM COURSE 1 AT 2:15 P.M. SATURDAY, AUGUST 6, 2011 – 50 MINUTES



A. STAGE 2 – CRITIRIUM COURSE 1 – COURSE DESCRIPTION

The circuit course is the same as the stage one time trial and is entirely within Elk Grove Village. The course is on residential and commercial streets of Elk Grove Village. Please be aware and courteous of public and private property. Public urination will not be tolerated at this event. Port-a-Pots will be located at the neutral support area located at Victoria Lane and Elk Grove Boulevard and near the start/finish area located at both Audubon Park (behind the announcers trailer) and in the Hattendorf Center (located behind the corporate VIP area).

Each participant will use all race numbers provided for the circuit race: one bib number each appearing on the participant's left and right jersey pocket and the numbers are vertical. Frame numbers should be displayed either behind the head tube or behind the seat.

B. RIDER SIGN-IN / STAGING

Rider sign-in will next to the winner's podium by the start/finish line. Sign-in will be 45 minutes before the start. Riders must be at sign-in and be available for staging and introductions by 2:00pm. The Start and Finish line is located on Elk Grove Boulevard adjacent to the Hattendorf Center parking lot (225 Elk Grove Blvd.). Riders outside a 20% finishing time will not be able to start the next stage.

C. STAGE 2 – TIME CUT

Those riders falling behind by more than 20% of the finishing time of the pack will be asked to withdraw from the race, but subject to the Commissaries discretion.

D. STAGE 2 – STAGE TIME BONUSES

The top three finishers of the stage 2 Criterium will receive the following time bonus:

1. First place finisher receives a 10 second time bonus
2. Second place finisher receive an 6 second time bonus
3. Third place finisher receives a 4 second time bonus

E. STAGE 2 – SPRINT CHALLENGE WITH TIME BONUSES

The Stage 2 Circuit Race will have two sprint challenges at 35 minutes to go, 25 minutes to go, and 15 minutes to go. The five riders to cross the line on sprint challenge laps will accumulate points throughout the stage 2 road race. The points for each sprint challenge lap will be awarded as follows:

1. First place finisher receives 5 points.
2. Second place finisher receives 4 points.
3. Third place finisher receives 3 points.
4. Forth place finisher receives 2 points.
5. Fifth place finisher receives a 1 point.

At the end of the stage 2 circuit race, the rider's sprint challenge points will be added together and the riders with the most accumulated sprint points win cash and time bonuses as follows:

1. First place overall receives a 3 second time bonus and \$125.
2. Second place overall receives a 2 second time bonus and \$75.
3. Third place overall receives a 1 second time bonus and \$50.

B. STAGE 3 – RIDER SIGN-IN / STAGING

Rider sign-in will next to the winner's podium by the start/finish line. Sign-in will open 45 minutes before the start of the stage. Riders must be at sign-in and be available for staging and introductions by 1:30pm. The Start and Finish line is located adjacent to the Hattendorf Center parking lot (225 Elk Grove Blvd.).

C. STAGE 3 – TIME BONUSES

The top three finishers of the stage 3 criterium will receive the following time bonus:

1. First place finisher receives a 10 second time bonus
2. Second place finisher receive an 6 second time bonus
3. Third place finisher receives a 4 second time bonus

D. STAGE 3 – SPRINT CHALLENGE WITH TIME BONUSES

The Stage 3 criterium will have three sprint challenges at the end of lap 3, end of lap 6, and end of lap 12. The five riders to cross the line on sprint challenge laps will accumulate points throughout the stage 3 circuit. The points for each sprint challenge lap will be awarded as follows:

1. First place finisher receives 5 points.
2. Second place finisher receives 4 points.
3. Third place finisher receives 3 points.
4. Forth place finisher receives 2 points.
5. Fifth place finisher receives a 1 point.

At the end of the stage 3 criterium, the rider's sprint challenge points will be added together and the riders with the most accumulated sprint points win cash and time bonuses as follows:

1. First place overall receives a 3 second time bonus and \$150.
2. Second place overall receives a 2 second time bonus and \$100.
3. Third place overall receives a 1 second time bonus and \$50.

If there is a tie in the placing by points at the end of the stage, the tie will be broken by the finish line placement of the tied riders at the end of that stage in favor of the higher placing rider. If the rider does not finish the race, the next rider in order with total points and finishes will receive the award.

Section 3

Awards Distribution

Procedures

This year there is a change in the cash payout procedure. This year, the Tour of Elk Grove will pay all prize money 60 days after the conclusion of the race upon the direction of team management. All required forms for tax purposes must be completed by the team/rider. If not filled out on site these forms must be filled out and mailed back to Special Events Management, 2221 W. 43rd St, Chicago, IL 60609 in order to receive prize money.

Requirements

Deductions from prize winnings can occur if rider has not paid entry fee.

No prize money will be paid unless you have provided the following current information on a W-9 or payment form:

- Social Security or Tax ID Number
- Exact name of payee to receive payment
- If listed as team, provide individual riders information
- Complete and accurate mailing address
- Email address
- Current telephone number for contact purposes

You are required to return the prize money if you are disqualified for any reason including failing doping controls, the rider or team is required to return the prize money to the promoter. Prize Money will be distributed after the event for all races. Teams must provide SEM with a list of riders who have placed in each race and for each rider receiving any other bonuses or primes the TEAM MANAGER MUST provide SEM with the rider's name, license information and accumulated total to be collected. Amounts will be verified and the accumulated total will be written to each team once all tax information is properly filled out and provided to SEM. Should you have any questions regarding payment, contact Special Events Management.



Tour of Elk Grove Key Places and Events



Mandatory Team Registration
9:00am - 10:00am Friday, August 5
Hattendorf Center
225 Elk Grove Blvd
Elk Grove Village, IL



Mandatory Team Meeting
11:30am Friday, August 5
Elk Grove Village Hall
Council Chambers
901 Wellington
Elk Grove Village, IL



Team Parking and Staging
For The Entire Event
NEW LOCATION
On Ridge Ave. North of
Elk Grove Blvd just beyond
the food and beer pavilion.
This is next to where team
parking was last year.

Details and address and maps for these locations are in the Technical Guide

